



CERTIFICATE OF PROFICIENCY IN ENGLISH (CPE)

Cambridge University

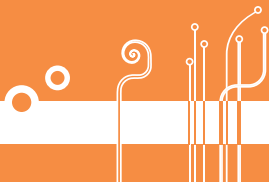
Content and overview

Reading (1 h 30min) Part 1 consists of three short texts with six four-option multiple-choice cloze questions on each. 2. Four short texts with two four-option multiple-choice questions on each. 3. Gapped text with seven questions. 4. Long text with seven four-option multiple-choice questions. Test focus: assessment of candidates' ability to understand the meaning of written English at work, phrase, sentence, paragraph and whole text level.

Writing (2 h): 1. One compulsory question. 2. Candidates answer one question from a choice of four questions (including the set book option) Test focus: assessment of candidates' ability to write specified text types with a range of functions.

Use of English (1 h 30 min): 1. Modified open cloze with fifteen questions. 2. one short text with ten word formation questions. 3. Six sets of three gapped sentences. 4. Eight key word transformations. 5. Two texts with four questions and a summary writing task.

Test focus: assessment of candidates' ability to demonstrate knowledge and control of the language system by completing various tasks at text and sentence level.



Listening (40 min): Part 1 consists of four short extracts with two three-option multiple-choice questions on each. 2. One long text with nine sentence completion questions. 3. One long text with five four-option multiple-choice questions. 4. One long text with six matching questions.

Test focus: assessment of candidates' ability to understand the meaning of spoken English, to extract information from a text and to understand speakers' attitudes and opinions.

Speaking (19 min): 1. Interview. 2. Collaborative task. 3. Individual long turns and follow-up discussion.

Test Focus: assessment of candidates' ability to produce spoken English using a range of functions in a variety of tasks.

2013 Prices

PET	103 €
FCE	189 €
CAE	207 €
CPE	214 €

Información y reserva de plazas en

Av. Marqués de Sotelo 5 (Pasaje Rex, B-2º-4)
46002 - VALENCIA

Tel: 96 352 77 14 / 96 351 45 56

e-mail: informacion@newmacegold.com

www.newmacegold.com

Horario: Lunes a Jueves de 9 a 21 horas
Viernes de 9 a 20 h / Sábados de 9:30 a 13:30